

## Project Apis m (PAm)

Colorado State Beekeepers Association  
June 15, 2013  
Silt, CO  
Christi Heintz  
Meg Ribotto



© 2012 Heintz, pomegranate

Project Apis m.



### Topic this evening:

1. What is Project Apis m doing???



Like · Comment · Share · Tag Friends

3



## PAm's Research Program & Corporate Sponsorship Working Together!



Project Apis m.



### Current Projects

Ellis	UF	Varroa Control-RNAi	\$	16,835
DeRisi	UCSF	Viruses & Pathogens II	\$	45,000
Bromenshenk	Bee Alert	Virus & Nosema	\$	36,000
Flenniken	MSU	Virology & Immunology	\$	43,500
Martin	UK/HA	Virus-Pathogen Complex	\$	32,556
Wick	BVS, Inc	Virus & Essential Oils	\$	15,000
Spivak	U MN	Landscapes & Nutrition	\$	10,000
Huang et al	MSU	Amino Acids	\$	27,500
Eischen	USDA	Colony Density Almonds	\$	16,200
Pettis	USDA	Amitraz	\$	33,140
Frazier	PSU	Pesticide CostShare	\$	10,000
Johnson, R	OH State	Pristine	\$	29,690
vanEngelsdorp	U MD	Midwest Tech Transfer	\$	21,430
Mueller	UCCE	On-Line Tools	\$	3,300
			\$	340,151

## Apply for Grants



Infuse as much grant money as possible into the bee world.

## Corporate Sponsorship



**COSTCO**  
WHOLESALE



## Projects with Bee Organizatons





# CSBA Bi-Monthly E-newsletter

The California Bee Times



CALIFORNIA STATE BEEKEEPERS ASSOCIATION, INC.  
800-757-2847 • 916-434-0800 • 916-434-1311

**The California BEE TIMES**

CSBA Newsletter April 2013

**CSBA Officers**

**President**  
John Miller  
*Newcastle*

**1st Vice President**  
Bill Lewis  
*Lake View Terrace*

**2nd Vice President**  
Brad Pankratz  
*Orland*


**Secretary/Treasurer**  
Carlen Jupe  
*Sakda*

**Executive Committee**  
Steve Godlin

**Dear Hannah,**

**The President's Word**

Hello,  
According to the April 10, 2013 L.A. Times, we are in the midst of the largest die off of honeybees in U.S. history. My fellow beekeepers, we are again very visible. We beekeepers have always known we were important - finally, others think so too. The challenge is real. Every reader either is or knows a



Contact Carlen Jupe at [castatebeekeepers@hotmail.com](mailto:castatebeekeepers@hotmail.com)

**Truckloads (2010)  
through CA Border  
Inspection Stations  
2,700**





**How Costco Will Help**  
***Enhancing Honey Bee Health Through...***

- **New Tech Transfer Team**
- **Legacy Germplasm Library**
- **Costco Scholar**

**SJV Tech Transfer Team**

1. Monitor colonies over time for diseases and mite pests
2. Ensure colonies are healthy for pollination
3. Facilitate cooperative research



Project Apis m.



## Legacy Germplasm Library



- Maintain a functional and sustainable genetic repository for honey bee germplasm
- Long-term honey bee stock preservation and improvement
- Maintain and increase genetic diversity
- Vital to the beekeeping industry
- Best long-term solution to honey bee problems

Project Apis m.



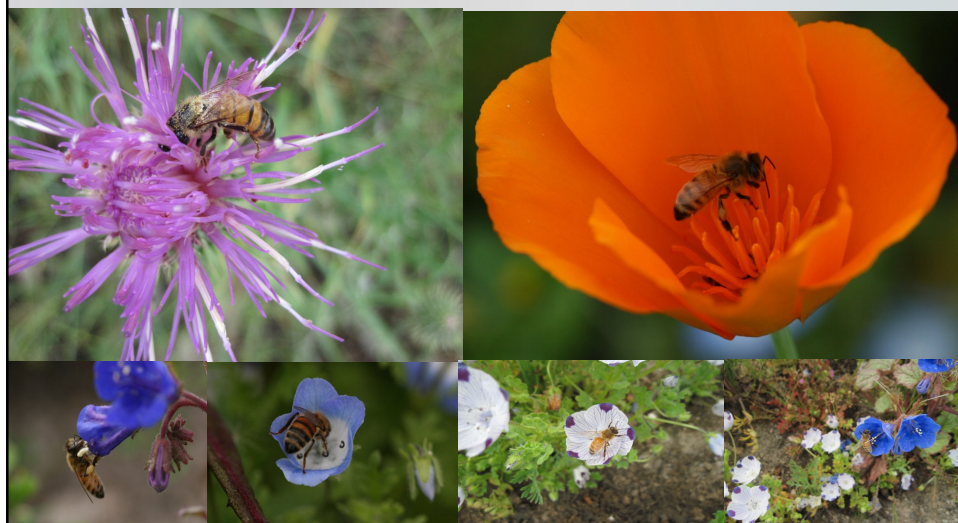
## Costco Scholar



- Invest in today – get something back today
- Costco developing a honey bee researcher
- PhD student level
- 1<sup>st</sup> ever multi-year fellowship initiated
- Legacy contributions
- Others in the industry to follow lead



# Forage Project



## What PAm is Doing on the Forage Grant

- Identifying seed mixes for fall and spring
- Sourcing seed suppliers
- Initiating forage plots throughout California
- Seeking out public lands for bee pastures
- Justifying economical & ecological benefits for growers
- Leveraging grant funding – corporate funding
- Conducting nutritional analyses of seed mixtures
- Communicating thru media coverage: tv, print & internet



## Why providing bee forage is important

When our 1.6 million honeybee colonies arrive in California....

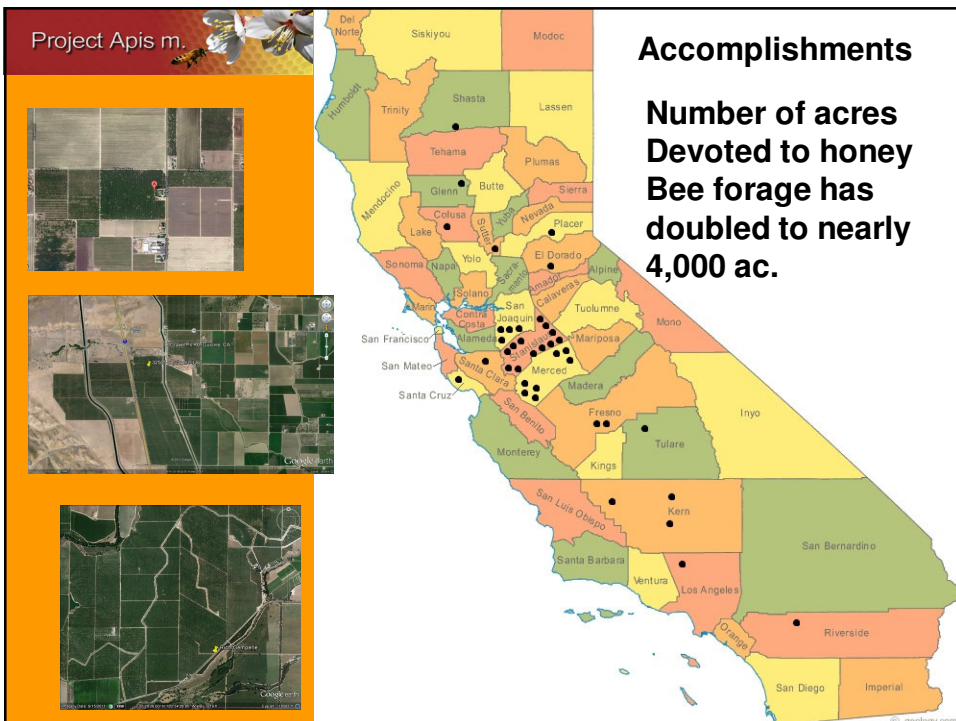
2012 Heintz Lost Hills, CA



To pollinate the 800,000 acres of almonds...



**...Our honeybees will have something to eat.**







Project Apis m.

**Almond Board Conference  
December 2012 Sacramento, CA**

**TARGET:**  
**Almond growers to  
plant seeds this  
coming Fall 2013**

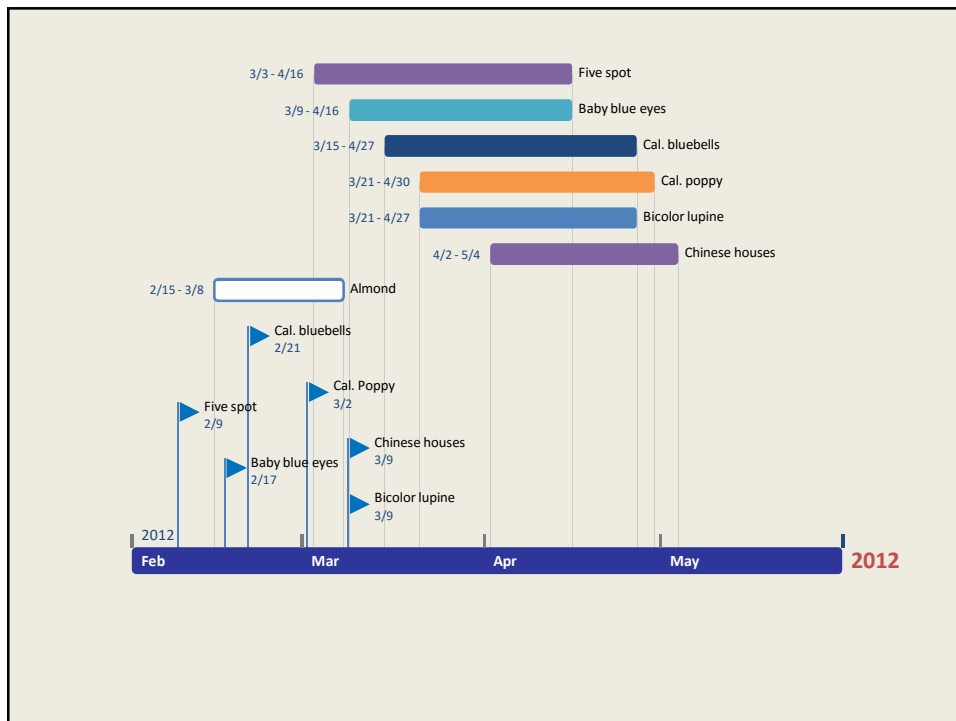


Christine Gemperle - Almond Grower  
and 'Seeds for Bees' Participant



Guest Speaker - George Hanson, ABF President

## Mustards – Nov through Jan





### A few of the Capay Ranch Field Day Flower Species



Yellow Blossom  
Sweet Clover



White Blossom  
Sweet Clover



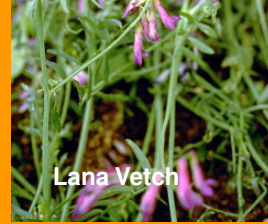
Rapini *Brassica*



Crimson Clover



Purple Vetch



Lana Vetch



Alyssum



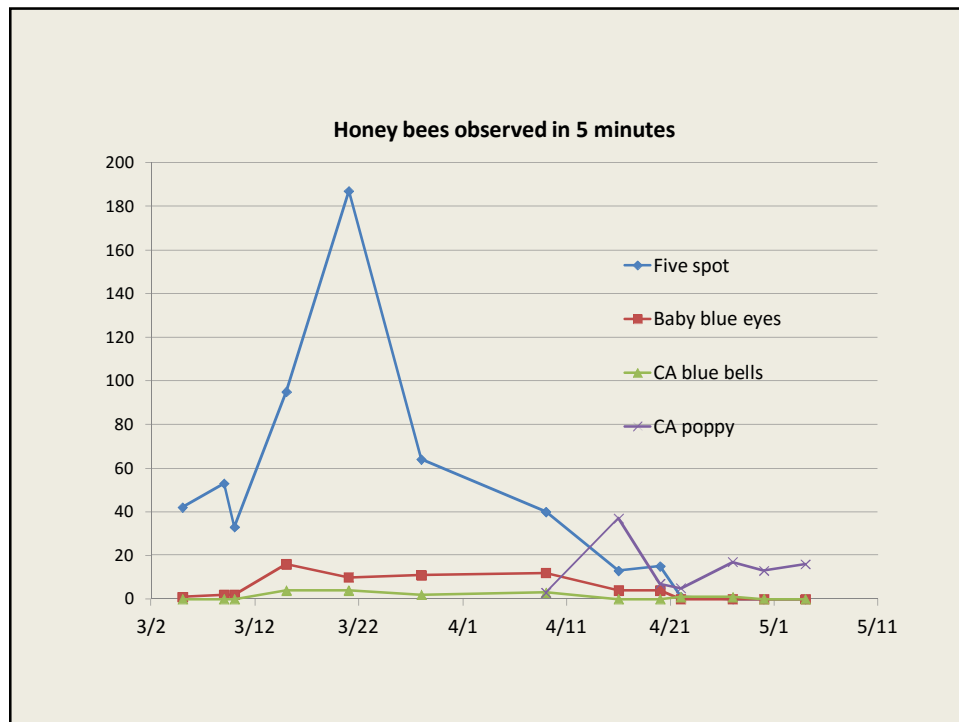
PAm 1 Mix Wildflowers



### Planting Native Wildflowers to Extend Bloom in Almonds







**PAm Forage Field Day  
Capay Ranch, Hamilton City, CA  
April 26, 2013**

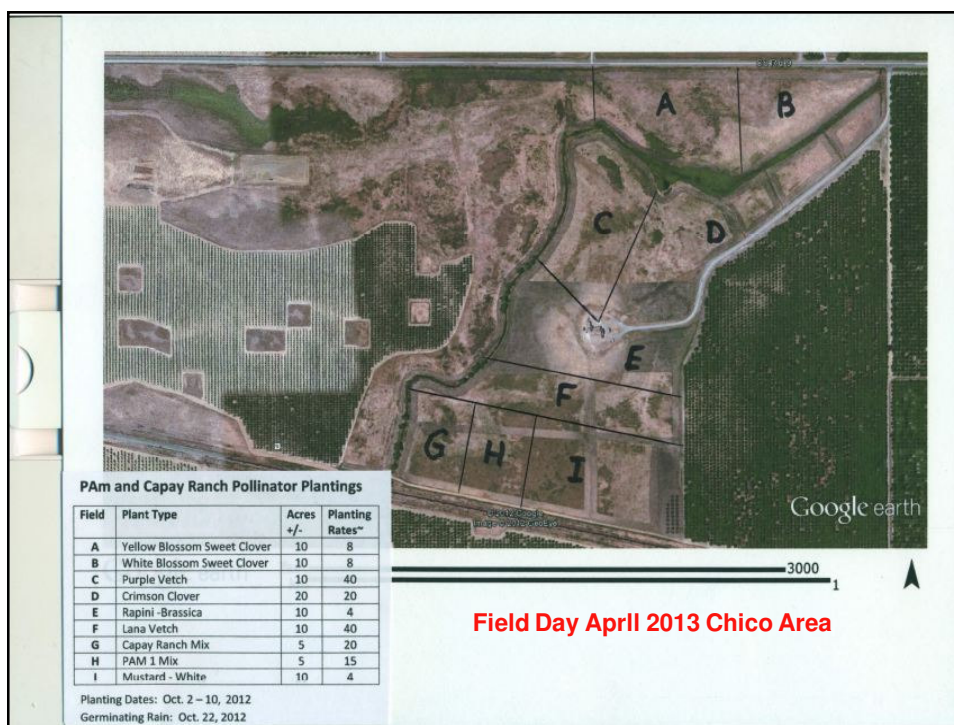


### PAm and Capay Ranch Pollinator Plantings

Planting Dates: Oct. 2 – 10, 2012

Germinating Rain: Oct. 22, 2012

Field	Plant Type	Acres +/-	Planting Rates~lb/ac
A	Yellow Blossom Sweet Clover	10	8
B	White Blossom Sweet Clover	10	8
C	Purple Vetch	10	40
D	Crimson Clover	20	20
E	Rapini -Brassica	10	4
F	Lana Vetch	10	40
G	Capay Ranch Mix	5	20
H	PAM 1 Mix	5	15
I	Mustard - White	10	4



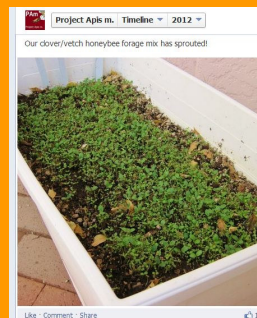
Project Apis m.



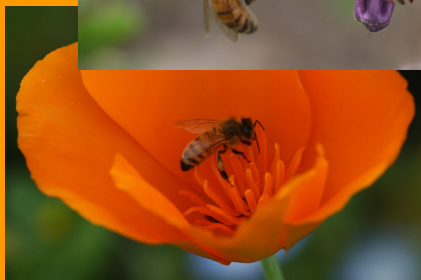
## Accomplishments

### Identified hurdles to planting honey bee forage.

- Lack of natural rainfall to germinate seeds
- Weed pressure
- Costs associated with cultivation, labor and fuel
- Hesitation to introduce plants that may require additional control & management measures
- Inability to recognize appreciable benefits of planting honey bee forage – business model need



### Wildflower Mix





### CAPAY RANCH MIX Clover/Vetch Mix



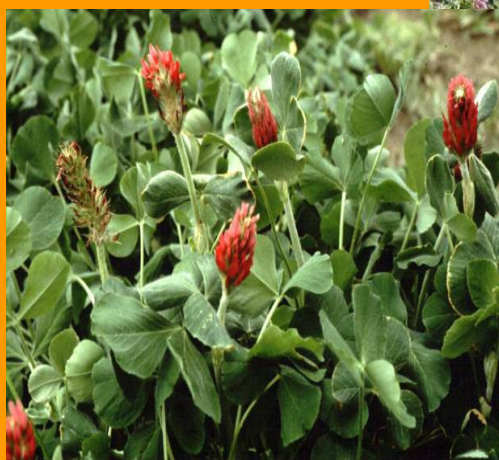
Cost-effective and honey bee appropriate seed mix.



### Persian and Rose Clover



## Crimson Clover & Purple Vetch



### Accomplishments

#### Identified benefits to growers.

- Soil stabilization and reduced runoff
- Nitrogen fixation
- Addition of organic matter to the soils
- Decreased soil compaction and increased water penetration
- Increased habitat for not only honey bees, but other beneficials
- Potential to reduce pollination rental expense
- Contribute to crop pollination and yield

Project Apis m.





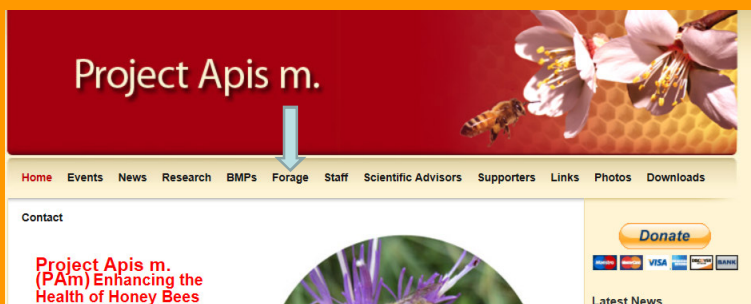




## Accomplishments

### Outreach and Education

- 'Forage' tab of [www.ProjectApism.org](http://www.ProjectApism.org)
  - Forage demonstration plots
  - Changing landscapes to bee pastures
  - Top floral picks for honey bee plants with photos & descriptive info
  - a Bee Smart app
  - Project updates to CSBA membership



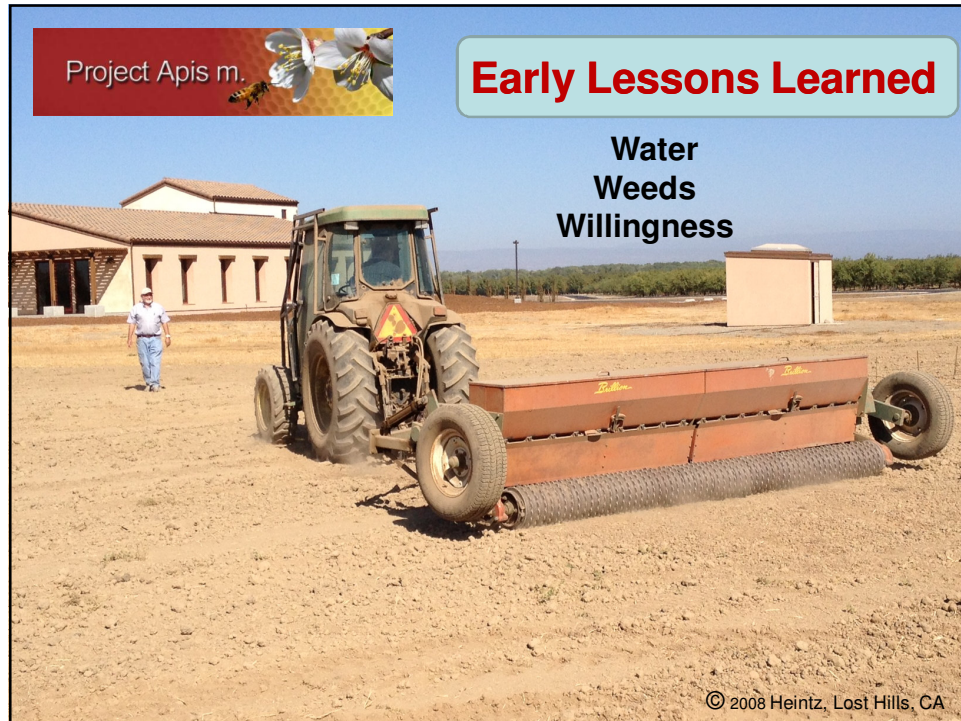
Project Apis m.

### Early Lessons Learned

Native wildflower seeds are cost prohibitive to do on a large scale  
 Long-term, clover/vetch and mustards will be important plant species for honey bees  
 Emergence will be highly dependent upon water supply  
 One hurdle will be sustaining the project after 3 year cost-assistance expires  
 Begin outreach for grower enrollments earlier in the summer



© 2009 Heintz, Lost Hills, CA



## Accomplishments

**Increased awareness with agencies/land management programs with jurisdiction of large US acreage.**



U.S. DEPARTMENT OF THE INTERIOR  
BUREAU OF LAND MANAGEMENT



USDA NRCS  
Natural Resources Conservation Service  
United States Department of Agriculture



USDA FSA  
United States Department of Agriculture  
Farm Service Agency



USDA CRP  
Natural Resources Conservation Service  
United States Department of Agriculture







# Facebook and Promoting

## Best Management Practices

Sharing from other networks is easy

Instant access

**Albums & Timelines**

Personal, can show real people doing real things

**Easily accessible**

Very Visual- lots of pictures

Beekeepers can better connect with information and to others

Easily linked to other sources of information

Can keep information continuously flowing- new day new BMP focus

*Continuous flow of information can be tailored to the season*

**Youtube is a video sharing website that allows you to post share and upload personal videos for the world to see.**



**Unsure how to get started with youtube.com?**

You will  
then  
come  
to a  
screen  
full of  
Videos  
that  
relate to  
what  
you  
searche



#### Project Apis m. Transporting Honeybee Colonies to California for Almond Pollination

by msworkerbee1 • 5 months ago • 691 views

Project Apis m. (PAm), a non-profit honey bee research organization, promotes Best Management Practices (BMPs) for improving ...



#### Project Apis m. Varroa Best Management Practices

by msworkerbee1 • 2 years ago • 8,507 views

Project Apis m. (PAm), a non-profit honey bee research organization, promotes Best Management Practices (BMPs) for improving ...



#### Project Apis m. Nutrition Best Management Practices

by msworkerbee1 • 6 months ago • 216 views

Project Apis m. (PAm), a non-profit honey bee research organization, promotes Best Management Practices (BMPs) for improving ...



#### Project Apis m. Nosema Best Management Practices

by msworkerbee1 • 6 months ago • 274 views

Project Apis m. (PAm), a non-profit honey bee research organization, promotes Best Management Practices (BMPs) for improving ...

**Project Apis m. Varroa Best Management Practices**

msworkerbee1 • 4 videos

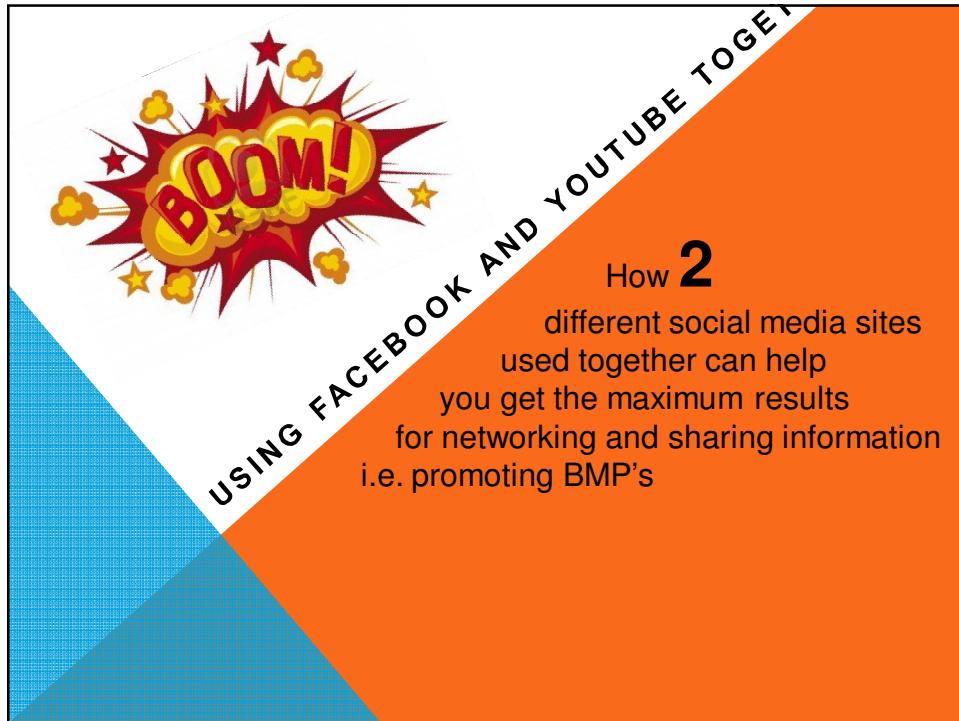
8,526

Subscribe 28

15 0

28 subscriptions yet 8,526 Views





**BOOM!**

USING FACEBOOK AND YOUTUBE TOGETHER

How **2** different social media sites used together can help you get the maximum results for networking and sharing information i.e. promoting BMP's



**TWITTER**

Tweet  
Retweet  
Favorite

**Project Apis m.**  
@ProjectApis

The mission of Project Apis m. (PAm) is to direct research that will enhance the health of honeybees while improving crop production.  
<http://www.ProjectApis.org>

27 TWEETS 10 FOLLOWING 8 FOLLOWERS

**Tweets**

**Project Apis m.** @ProjectApis  
Check out our NEW enewsletter! #PAm #projectapism  
[archive.constantcontact.com/fs109/11098925...](http://archive.constantcontact.com/fs109/11098925...)

project



## USING TWITTER TO PROMOTE

### BEST MANAGEMENT

**twitter 101**

Quickly update  
HASHTAG TO LINK TO NEW PEOPLE QUICK

Daily postings

Only 140 characters MAX

**HASHTAG** More frequent posting is appropriate  
Brief news Constant updates

Quick links to articles, facebook page or website





Project Apis m. 

## Research Summit

Cabazon, CA Nov.12, 2012

***PAm held the 1<sup>st</sup>-Ever Collaborative Research Strategic Planning Summit***

- Beekeepers and research leaders
- Developing an industry-wide research planning framework
- Consensus on priority issues
- Impact on the beekeeping industry





Varroa/Virus Complex
Pesticides
Nutrition/Habitat Loss

*“To ensure long-term sustainability of honey bees to protect the nation’s food supply.”*

Project Apis m. 

## This Week

Honey Bee Health Summit in St. Louis, MO  
PAm Sponsored – Monsanto Hosted



# Bringing the best minds together to solve honey bee health challenges



## What Project Apis m is doing for BEEKEEPERS

1. Prioritizing honey bee *research* for the industry and conducting the research
2. Building honey bee *forage* resources
3. Improving California *border* crossings
4. Seeking additional grant and corporate funding to meet beekeeper needs





New Pres.

### Grants and Corporate Funding Projects

CDFA Grant –	honey bee forage
Monsanto –	honey bee forage
ND Dept Ag –	pollen quality
CDFA Grant –	BMPs & social media
Costco -	SJV Tech Transfer
	Honeybee germplasm
	Costco scholar PhD

## Together, we can solve bee challenges and improve crop production.





© 2011 Ribotto







**What we WANT to do...**

**PAm is requesting YOUR help in funding research projects TODAY to help the honey bee NOW.**

**We especially want to fund recent proposals we have received. Bee research GUIDED by beekeepers. PRACTICAL solutions!**





Project Apis m.

## Projects we want to fund

- Dr. Reed Johnson - Dimilin Research
- Maryann Frazier - Pesticide Cost Share Program
- Dr. Brian Johnson - IVDS (Integrated Virus Detection System)
- Dr. Johnathan Engelsma - Hive Scale Network
- Dr. David Tarpy - Nexcelom Vision System to process BIP (Bee Informed) samples

## Donate!



Downloads Contact

**Project Apis m. (PAm) Enhancing the Health of Honey Bees**

PAm is requesting **YOUR** help in funding these research projects **TODAY** to help the honey bee **NOW**. We especially want to fund recent proposals we have received. Bee research **GUIDED** by beekeepers. **PRACTICAL** solutions!

**Donate**

Latest News

2012 - 2013 Honey Bee Winter Loss Survey

[Read more...](#)

You can personally help PAm fund research by donating on our website

Project Apis m.



**Questions?**



Thank you!